

London Medical & Aesthetic Clinic proves how Sculptra is bridging the gap between invasive surgery and non-surgical facial countering.

One of the things that most compels people to visit a cosmetic aesthetic practitioner is concern about facial ageing. Over time, skin loses its full, firm, youthful appearance — a natural result of the ageing process. Skin starts to become loose and begins to wrinkle and the fat tissue that helps to fill out the face is lost.

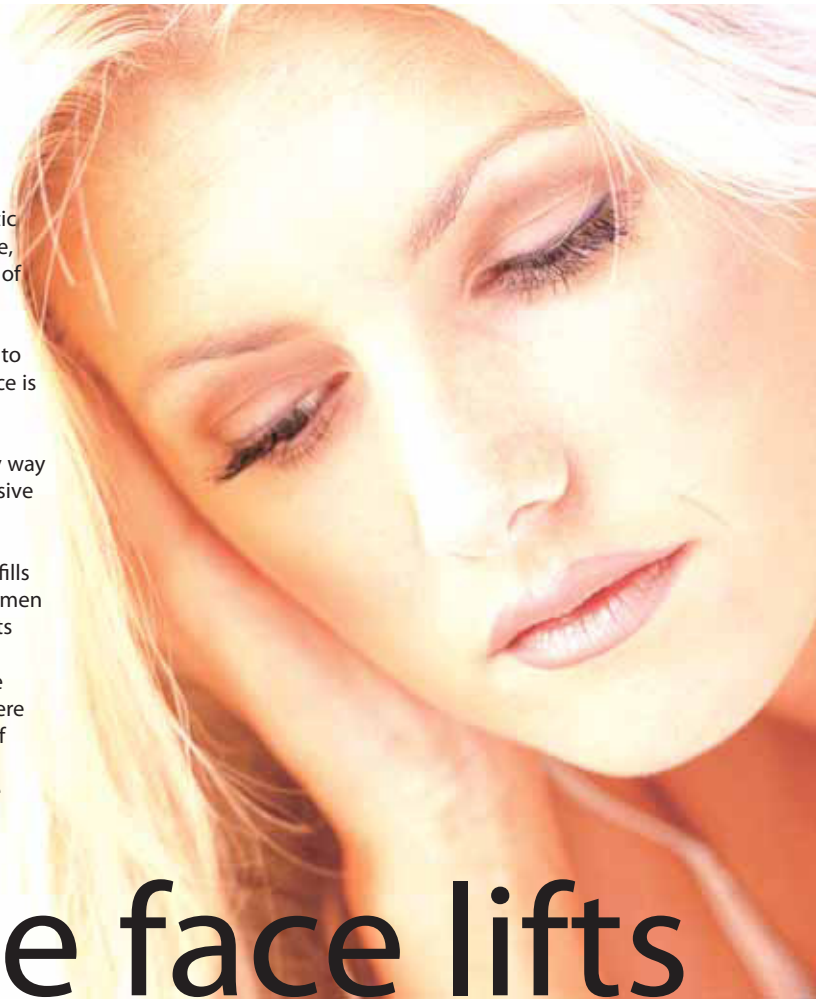
The reduction in skin volume may make facial features begin to look thin and narrow, sometimes giving the impression the face is older than it actually is.

While dermal fillers, such as Restylane and Perlane, offer an effective non-surgical option for clients, until recently the only way to noticeably improve the shape of the face was through invasive surgical procedures like face lifts and fat grafting.

Sculptra is designed to go one step further and close the gap between surgical and non-surgical cosmetic procedures. As it fills and lifts sagging skin by restoring volume, it is the answer for men and women seeking an alternative to more invasive treatments such as plastic surgery.

It is designed for facial sculpting and, in particular, to increase definition in the cheek bones and to restore facial volume where the cheeks have become hollow as a result of ageing or loss of fatty tissue.

Sculptra can be used as a stand-alone treatment or alongside dermal fillers.



# Knife-free face lifts

Where should Sculptra be used?

- Deep folds between the nose and mouth (nasolabial folds)
- Folds around the corners of the mouth (marionette lines)
- Wrinkling in cheeks or chin
- Sunken cheeks
- Deep scars

Sculptra has long-lasting results which can be seen for up to three years.

Mode of action

Sculptra is available in powder form and has to be reconstituted with sterile water 72 hours before injection. When injected into the skin, it immediately fills the contour defect and restores volume. Within two to three days, it is absorbed by the body and wrinkle depth increases slightly. However, over the following weeks, a second phase occurs consisting of a build-up of soft tissue, smoothing out the wrinkles and contour defects.

Four to six weeks after treatment, patients are re-evaluated to determine if additional correction is needed. On average, after a six-week period, a clear effect can be seen from treatment. The total number of treatment sessions needed may vary. The most common side effects include tenderness, redness and slight bruising, which lasts, on average, two to four days.

Dr Ayham Ayoubi is an ENT, Facial Plastic and Laser Surgeon; an expert on non-surgical cosmetic treatments and a pioneer in Sculptra treatment in the UK.

His fundamental philosophy in facial plastic surgery and cosmetic treatments is to enhance natural facial beauty without changing or losing natural facial features and expressions.



35-year-old woman, before and after one Sculptra treatment

Spring is just around the corner, so let the London Medical and Aesthetic Clinic freshen your looks - it specialises in cosmetic treatments, facial rejuvenation and skin care treatment.

Safe, non-surgical cosmetic treatment alternatives to cosmetic surgery include:

Sculptra: non-surgical facelifts

Botox®: a cosmetic to smooth lines and wrinkles such as frown lines, crow's feet and nasal crunches

Dermal Fillers (Restylane, Perlane and Softline): filling (nasolabial folds) and lip augmentation

Restylane for lips: for sensuous lips and a more defined lip border.

Smartlipo: Revolutionary laser treatment for fat reduction under local anesthetic, introduced into the UK by Dr A Ayoubi.

London Medical and Aesthetic Clinic is located at:

**1 Harley Street London W1G 9QD**

For more information or to book a consultation with

Dr Ayoubi MD MS MEAFPS DLORCS (London), visit:

[www.lmaclinic.com](http://www.lmaclinic.com) or call our cosmetic advisor on 020 8342 1100.



56-year-old woman, before and after four Sculptra treatments